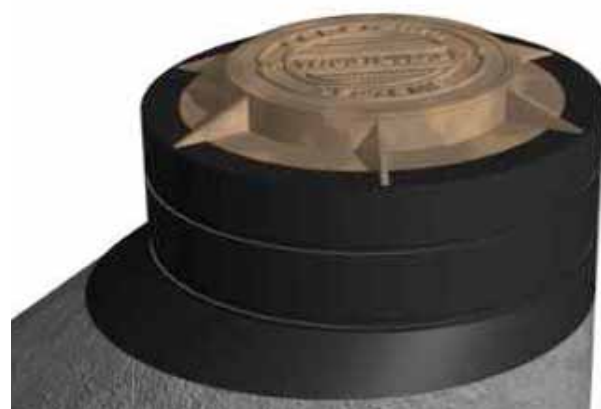


WrapidSeal

Manhole Encapsulation System

WrapidSeal is a wrap around heat shrinkable sheet that has been specifically designed for protection of buried and exposed manhole structures. WrapidSeal is supplied in bulk rolls of varying widths and consists of a crosslinked polyolefin backing, coated with a protective heat activated adhesive. A separate closure is used to create a complete sleeve with the adhesive effectively bonding to the substrate, providing corrosion protection and adhesion for the impermeable backing.



Heat activated, high shrink membrane

- Torch applied, shrinks to fit profile

High tensile & elongation

- Accommodates movement

Excellent abrasion resistance

- Tough product, resists soil stress

Bulk roll

- Fits any size manhole

Complete coverage

- Reduces ground water infiltration

Provides corrosion protection

- Extends service life

Long Term Protection

- Once installed, the system creates a barrier to water infiltration and effectively protects the manhole support structure and frame from ground moisture, preventing corrosion and freeze-thaw damage. In below grade vaults or concrete lines, WrapidSeal is used to minimize water infiltration, reducing dewatering costs and loads on waste water treatment facilities.

Applications



Manhole Encapsulation



Water Pipelines



Repair & Rehab



Step-Down Joints



WrapidSeal

Manhole Encapsulation System

Adhesive Properties	Test Method	Typical Properties
Softening Point	ASTM E28	100°C
Lap Shear Strength	DIN 30 672	8 N/cm ²
Backing Properties		
Tensile Strength	ASTM D638	20 MPa
Elongation	ASTM D638	600%
Hardness	ASTM D2240	46 Shore D
Abrasion Resistance	ASTM D1044	45 mg
Sleeve Properties		
Peel Strength	ASTM D1000	15 N/cm
Water Absorption	ASTM D570	0.05%
Low Temp. Flexibility	ASTM D2671D	-40°C



Since 1967, Canusa-CPS has been a leading developer and manufacturer of specialty pipeline coatings for the sealing and corrosion protection of pipeline joints and other substrates. Canusa-CPS high performance products are manufactured to the highest quality standards and are available in a number of configurations to accommodate many specific project applications.

The product information shown here is intended as a guide for standard products.

Consult your Canusa representative for specific projects or unique applications at info@canusacps.com.

Western Hemisphere

SFL Canusa - WH
4757 93rd Ave NW
Edmonton, Alberta T6B 2T6
Canada

Tel: +1 587-754-8701

Europe

SealForLife Industries
Nijverheidsstraat 13
B-2260 Westerlo
Belgium

Middle East

SFL Canusa Middle East PPTS LLC
KLP5, Block B, Unit B-01,
Sector no.: KHIA8, Al Ma'mourah
PO Box 2621, Abu Dhabi,
The United Arab Emirates

**Quality Management
system registered to
ISO 9001**

Canusa warrants that the product conforms to its chemical and physical description and is appropriate for the use stated on the product data sheet when used in compliance with Canusa's written instructions. Since many installation factors are beyond our control, the user shall determine the suitability of the products for the intended use and assume all risks and liabilities in connection therewith. Canusa's liability is stated in the standard terms and conditions of sale. Canusa makes no other warranty either expressed or implied. All information contained in this data sheet is to be used as a guide and is subject to change without notice. This data sheet supersedes all previous data sheets on this product. E&OE

PDS_WrapidSeal_rev012